

# Kedem 6

---

English  
User Manual



Judahs

## Table of Contents

<b>1. Product Overview .....</b>	<b>3</b>	<b>10. TRS Jacks Configuration.....</b>	<b>16</b>
1.1. Specifications .....	3	10.1. TRS Jacks Configuration Location .....	16
1.2. Part Names.....	3	10.2. TRS Jacks explanation .....	16
<b>2. Bank .....</b>	<b>4</b>	<b>11. Exp Pedal .....</b>	<b>18</b>
2.1. Bank Selection .....	4	11.1. Ext Pedal Configuration Location .....	18
2.2. Bank Detail Settings .....	4	11.2. How to Set Up Ext Pedal Messages .....	18
<b>3. Setlist .....</b>	<b>5</b>	<b>12. AirMIDI .....</b>	<b>19</b>
3.1. Setlist Mode .....	5	12.1. AirMIDI Location .....	19
3.2. Setlist Detail Settings .....	5	12.2. How to Set Up AirMIDI .....	19
<b>4. Switch &amp; Action .....</b>	<b>6</b>	<b>13. User Setting .....</b>	<b>20</b>
4.1. Switches .....	6	13.1. User Setting Location .....	20
4.2. Actions .....	7	13.2. User Setting Details .....	20
4.3. Commands for Each Action .....	8	13.3. Main Page Style .....	20
<b>5. MIDI Settings .....</b>	<b>10</b>	13.4. Factory Reset .....	20
5.1. Empty .....	10	<b>14. Web .....</b>	<b>21</b>
5.2. PC .....	10	14.1. Web Location .....	21
5.3. CC .....	10	14.2. How to Connect to Wi-Fi .....	21
5.4. Note .....	10	14.3. How to Access the Web Server .....	22
5.5. Relay .....	11	14.4. Data Backup .....	22
<b>6. Pedal Manager .....</b>	<b>12</b>	14.5. Data Restore .....	23
6.1. Pedal Manager Location .....	12	<b>15. Update .....</b>	<b>24</b>
6.2. How to Register a Pedal .....	12	15.1. Update Location .....	24
<b>7. Favs .....</b>	<b>13</b>	15.2. Firmware Update .....	24
7.1. Favs Page Location .....	13	<b>16. Warranty and Support .....</b>	<b>25</b>
7.2. Favs Detailed Description .....	13	<b>17. Legal Notices .....</b>	<b>26</b>
<b>8. Clock Setting .....</b>	<b>14</b>		
8.1. Clock Setting Location .....	14		
8.2. Detailed Clock Settings Description .....	14		
<b>9. Clock Presets .....</b>	<b>15</b>		
9.1. Clock Preset Location .....	15		
9.2. Clock Preset Location .....	15		
9.3. How to Operate Clock Presets .....	15		

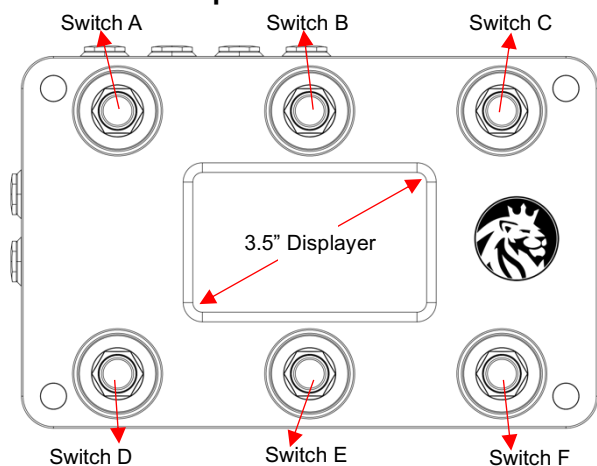
## 1. Product Overview

### 1.1. Specifications

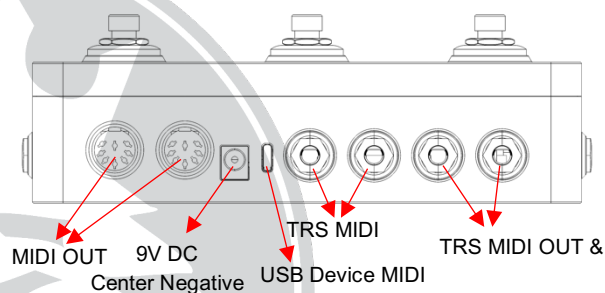
- **Size:** 190mm (W) × 121mm (D) × 62mm (H)
- **Weight:** 960g (2.12 lbs)
- **Power:** 9V DC (Center Negative) / **Current Consumption:** 250mA
- **Display:** 3.5-inch Touch LCD
- **MIDI Jacks:**
  - MIDI IN × 1
  - MIDI OUT × 2
  - USB MIDI OUT × 1
  - TRS MIDI × 2
  - TRS MIDI/Relay Dual-Purpose × 2
- **External Control Inputs:**
  - External Switch Input × 2
  - Expression Pedal Input × 1
- **Wireless MIDI:** AirMIDI

### 1.2. Part Names

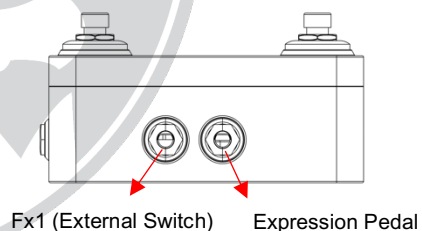
#### < Top Side of Kedem6 >



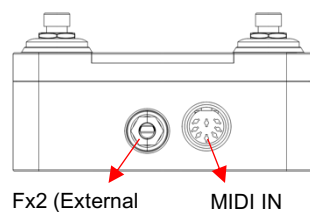
#### < Back Side of Kedem6 >



#### < Left Side of Kedem6 >



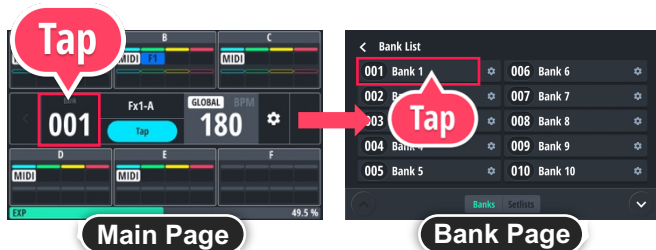
#### < Right Side of Kedem6 >



## 2. Bank

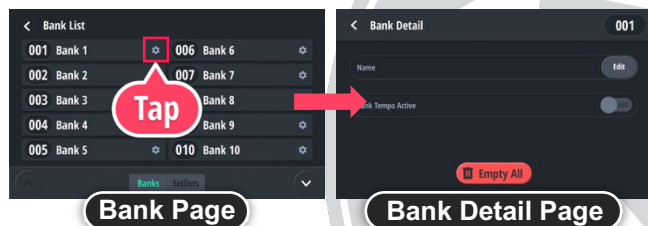
### 2.1. Bank Selection

- On the main screen, tap the Bank section.
- After entering the Bank page, select the desired bank. Once a bank is selected, you will return to the main screen.



### 2.2. Bank Detail Settings

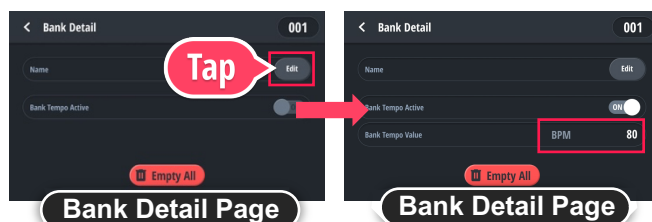
- To access Bank Detail Settings, click the gear icon on the Bank List screen.



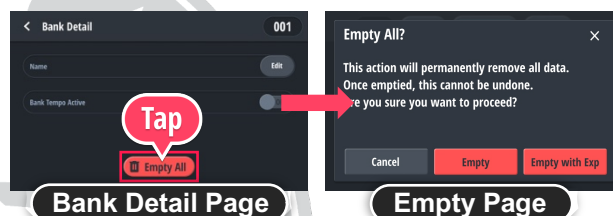
- Renaming the Bank
  - Select the Edit button next to Name.
  - Change the name on the text edit page.
  - Press the Save button to save.



- You can select the default tempo for each bank.
  - First, set Bank Tempo Active to ON.
  - Enter the desired tempo in Bank Tempo Value.



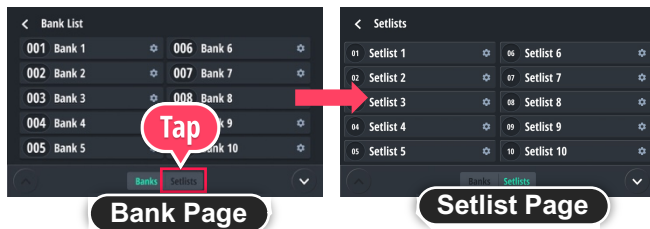
- Delete All Bank Data
  - Click the Empty All button.
  - If you select Empty on the next page, only the MIDI messages assigned to each switch will be deleted. The expression pedal MIDI messages will remain.
  - If you select Empty with Exp, both the switch MIDI messages and the expression pedal MIDI messages will be deleted.



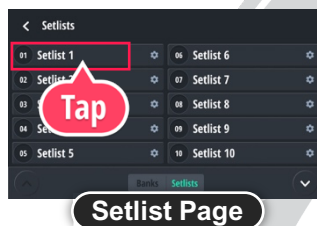
## 3. Setlist

### 3.1. Setlist Mode

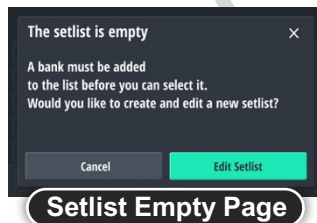
- You can select either Bank Mode or Setlist Mode, but not both at the same time.
- To change modes, press the Setlist button at the bottom of the Bank page to switch to Setlist Mode.
- When Setlist Mode is activated, the Bank Up/Down function changes to Setlist Up/Down.



- Select the desired setlist. After selecting a setlist, the main screen will appear.

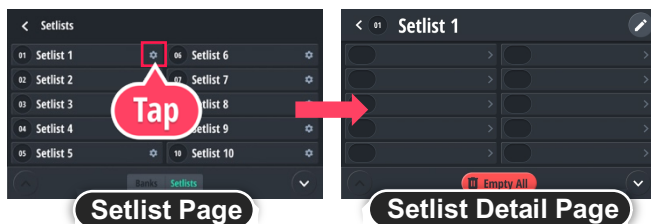


- If there are no banks added to the selected setlist, the following message will be displayed. Please press Edit Setlist to add banks to the setlist.

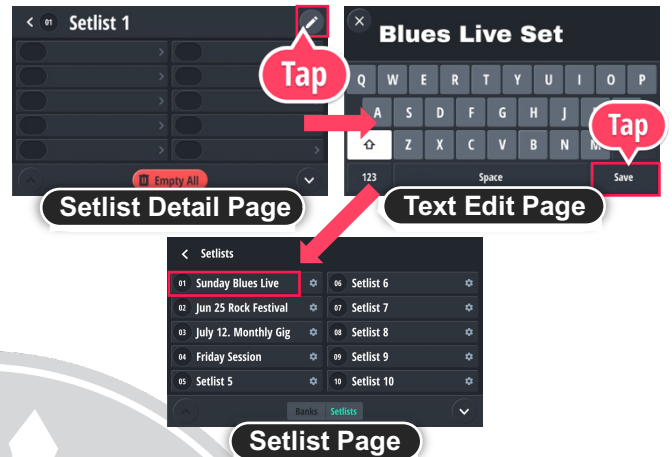


### 3.2. Setlist Detail Settings

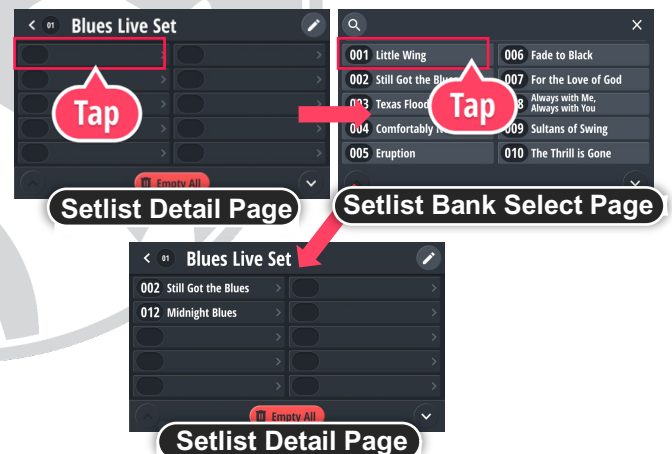
- To access the Setlist Detail Settings, click the gear icon on the Setlist screen.



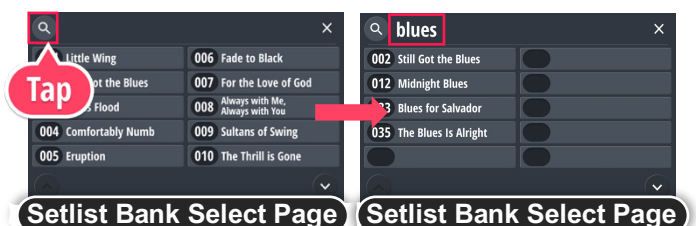
- Renaming the Setlist
  - 1) Tap the pencil icon at the top right to enter the text editing page.
  - 2) Change the name on the text editing page.
  - 3) Tap the Save button to save.
  - 4) Return to the Setlist screen to confirm the changes.



- Add Setlist Bank
  - Select an empty slot in the setlist.
  - When you select a desired bank from the bank list, it will be added to the setlist.



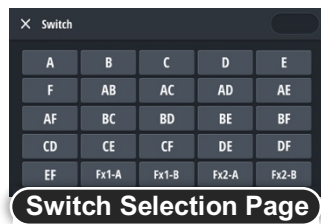
- When adding a bank in the setlist, you can search for the bank name by tapping the magnifying glass button at the top.



## 4. Switch & Action

### 4.1. Switches

#### 4.1.1. Types of Switches



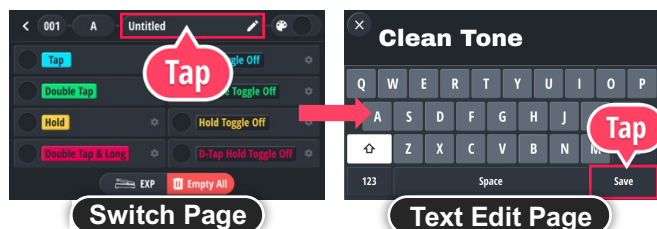
- Built-in Switches:
  - A, B, C, D, E, F -Total 6
- Union Switches:
  - Combination of 2 **Built-in** Switches  
e.g., A + B, A + C, etc. – 10 combinations
- External Switches:
  - Fx1-A, Fx1-B, Fx2-A, Fx2-B – Up to 4
- When using **dual switches** for Fx1 and Fx2, a total of **10** switches and **15** union combinations are available, allowing up to **25** switches in total.

All switches (Built-in, Union, External) can be controlled with **8 Action Types**.

(For details, refer to **4.3.2 Action Type Description**)

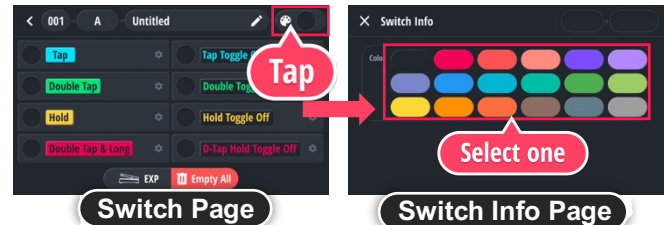
#### 4.1.2. Renaming Switches

- 1) Select the button with the pencil icon at the top of the Switches page.
- 2) Edit the name on the text editing page.
- 3) Press the Save button to save.
- 4) The updated name will be reflected as the switch name on the Main page.



#### 4.1.3. Changing Switch Color

- 1) Tap the palette-shaped button at the top right of the Switch page.
- 2) Select your desired color on the Switch Info page.
- 3) The selected color will be reflected in the switch color on the main page of the display.





## 4.2. Actions

### 4.2.1. Action Definitions

Action	Description
Tap	1. Press lightly once. 2. <b>Tap Action is executed.</b>
Tap Toggle Off	1. The switch must already be in Tap Action state. 2. Press lightly once. 3. <b>Tap Toggle Off is executed.</b>
Double Tap	1. Press quickly twice. 2. <b>Double Tap Action is executed.</b>
Double Toggle Off	1. The switch must already be in Double Tap Action state. 2. Press quickly twice. 3. <b>Double Toggle Off Action is executed.</b>
Hold	1. Press and hold for <b>more than 1 second.</b> 2. When releasing the switch, Hold Action is executed.
Hold Toggle Off	1. The switch must already be in Hold Action state. 2. Press and hold for more than 1 second. 3. When releasing the switch, Hold Toggle Off Action is executed.
Double Tap & Hold	1. Press the switch quickly twice. 2. Hold the second press for more than 1 second 3. When releasing the last switch, Double Tap & Hold Action is executed.
D-Tap Hold Toggle Off	1. The switch must already be in Double Tap & Hold Action state. 2. Quickly press the switch twice, holding the last press for more than 1 second. 3. When releasing the last switch, the Double Tap & Hold Toggle Off action is executed.

The Toggle Off action for each action is automatically disabled if the action has no command (MIDI message, Favs, or device control) assigned.

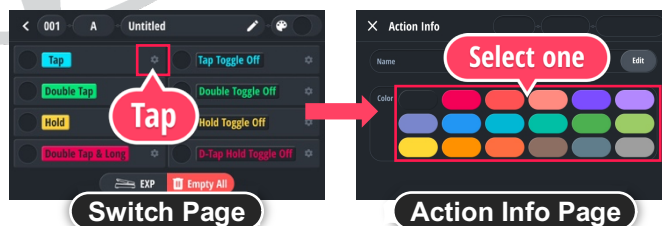
### 4.2.2. Rename Action Name

- 1) On the Switch page, select the gear icon button on the right side of each action button.
- 2) On the Action Info page, select the Edit button in the Name field.
- 3) On the Text Edit page, modify the name and press the Save button to save.
- 4) The updated name will be reflected as the switch name on the Main page when the switch is pressed to activate the action.



### 4.2.3. Action Color Change Location

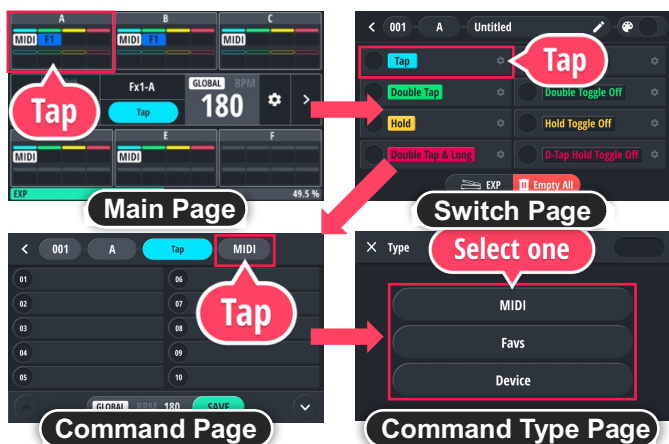
- 1) On the Switch page, select the gear icon button to the right of each action button.
- 2) On the Action Information page, select the desired color in the Color section.
- 3) The selected color is applied to the switch color on the main page of the display.



## 4.3. Commands for Each Action

### 4.3.1. How to Change Action Type

- 1) Select a switch on the **main page**
- 2) Select an action on the **switch page**
- 3) Tap the **command type** button at the top right of the command page (default value is MIDI)
- 4) You can change the type on the **command type** page.



### 4.3.2. Action Type Details

Each action can be assigned one of the following three commands:

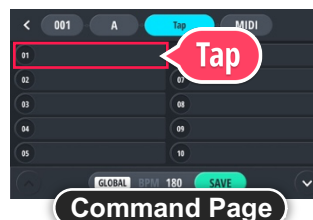
- **MIDI Message:**  
This is set as the default. It sends MIDI messages to control external devices.
- **Favs:**  
A **global preset** that stores MIDI messages and allows quick recall.
- **Device Control:**  
A command that directly controls specific functions of the device (Kedem 6), including **Bank Up/Down/Jump**, **Tap Tempo**, **Tempo Up/Down**, **Double Tempo**, **Half Tempo**, **Clock Preset Up/Down/Jump**, and more.

For details on each function, refer to 4.3.5. **Device Control**. For information on Clock Presets, refer to 9. **Clock Presets**.

### 4.3.3. MIDI Messages

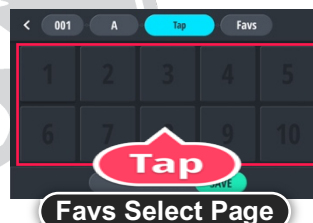
Up to 30 messages can be sent **at once**, including **Program Change (PC)**, **Control Change (CC)**, **Note**, and **Relay Control** (Relay Control is included but is not a MIDI message).

You can store up to **30 messages**, and when the action is triggered, these messages will be sent. (For more details, see 5. **MIDI Settings**.)



### 4.3.4. Favs

You can select **one of 10 options** for Favs. To set the MIDI message for Favs, refer to **section 6. Setting Favs**.

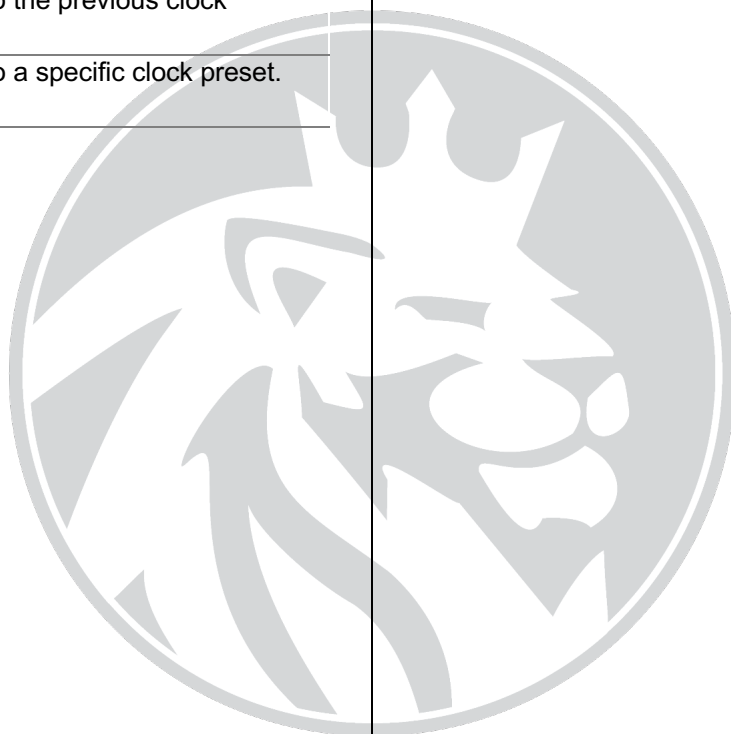




#### 4.3.5. Device Control

Command	Description
Bank Up	Move to the next bank.
Bank Down	Move to the previous bank.
Bank Jump	Jump to a specific bank.
Tap Tempo	Control the tempo (50–210 BPM) of clock-based effects.
Tempo Up	Increase the tempo by the set interval.
Tempo Down	Decrease the tempo by the set interval.
Double Tempo	Set the tempo to double speed (up to 210 BPM).
Half Tempo	Set the tempo to half speed (minimum 50 BPM).
Clock Preset Up	Move to the next clock preset.
Clock Preset Down	Move to the previous clock preset.
Clock Preset Jump	Jump to a specific clock preset.

(See 9. Clock Presets)



## 5. MIDI Settings

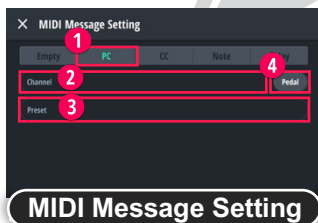
### 5.1. Empty

- These are the **default values** when generating MIDI messages.  
Used to **delete** stored MIDI messages.



### 5.2. PC

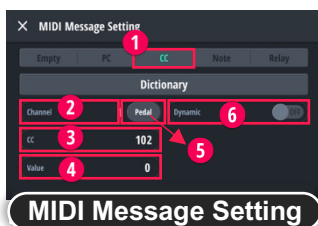
- In the message menu, select ① **PC**.
- Press ② to select the **channel**.
- Press ③ to set the **preset**.
- ④ is related to the Pedal Manager.  
(See 6. Pedal Manager)



### 5.3. CC

#### 5.3.1. General CC

- In the Message menu, select ① **CC**.
- Press ② to select the **channel**.
- Press ③ to set the **CC number**.
- Press ④ to set the **Value number**.
- ⑤ is related to the Pedal Manager.  
(See 6. Pedal Manager)
- ⑥ is the ON/OFF toggle to activate **Dynamic CC**.  
When set to ON, it operates as **Dynamic CC**



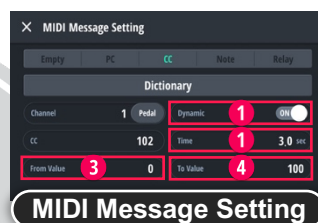
#### 5.3.2. Dynamic CC

##### Definition of Dynamic CC

- Dynamic CC gradually sends MIDI messages from the From Value to the To Value over the set duration.

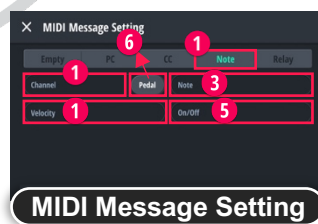
##### How to Set

- Channel and CC settings are the same as General CC.
- ① to activate Dynamic CC by turning it ON.
- Press ② to set the time (from 0.1 seconds to 10 seconds).
- Press ③ to set the starting value (From Value).
- Press ④ to set the ending value (To Value).



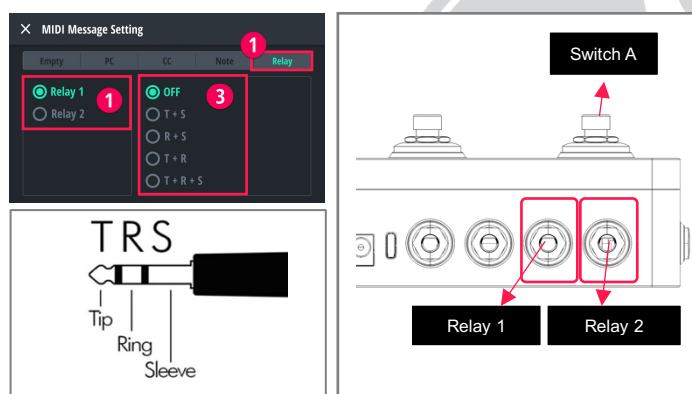
### 5.4. Note

- In the Message menu, select ① **Note**.
- Press ② to select the **channel**.
- Press ③ to select the **note**.
- Press ④ to set the **velocity (accent)**.
- Press ⑤ to select **Note On/Off**.
- ⑥ is related to the Pedal Manager.  
(See 6. Pedal Manager)



## 5.5. Relay

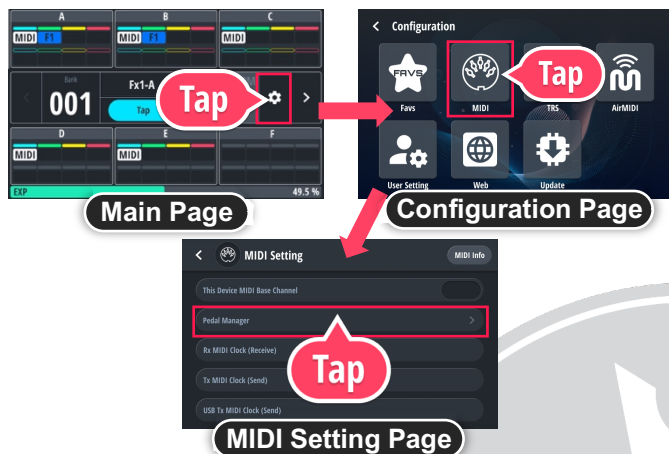
- Using the relay allows you to control functions such as an amp's clean/drive switch or a JHS Red Remote.
- To activate Relay 1 and 2, refer to “10.1.2. TRS MIDI Out & Relay.”
- In the **Message menu**, select ① **Relay**.
- Press ② to select the relay port.  
(Refer to the relay port image below.)
- Press ③ to select the connection type from T, R, or S.  
(Refer to the TRS cable image below.)
- Available connection options are: None, T+S, R+S, T+R, T+R+S.
- Always follow the manual of the pedal you want to control.
- Some pedals may have connection combinations that must never be used. We are not responsible for any product damage caused by incorrect connections.



## 6. Pedal Manager

### 6.1. Pedal Manager Location

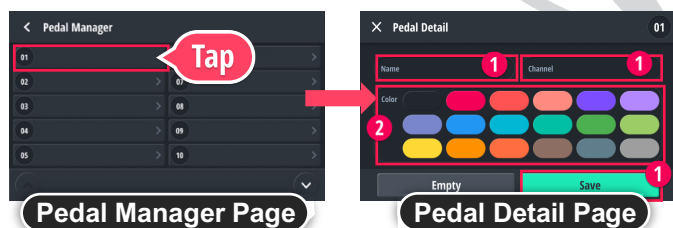
- 1) From the main screen, select the Settings button (gear icon).
- 2) Select MIDI.
- 3) Select Pedal Manager.



Alternatively, on the **5. MIDI Settings** screen, you can enter the Pedal Manager screen by pressing the Pedal switch in the Channel section on the PC, CC, or Note screens.

### 6.2. How to Register a Pedal

- 1) In the Pedal Manager, select an empty slot to enter the pedal detail page.
- 2) Set ① Name, ② Channel, and ③ Color.
- 3) Press the ④ Save button to save.



## 7. Favs

### 7.1. Favs Page Location

- 1) On the main screen, select the Settings button (gear icon).
- 2) In the Configuration page, select Favs.
- 3) In the Favs screen, select the desired number from 1 to 10.

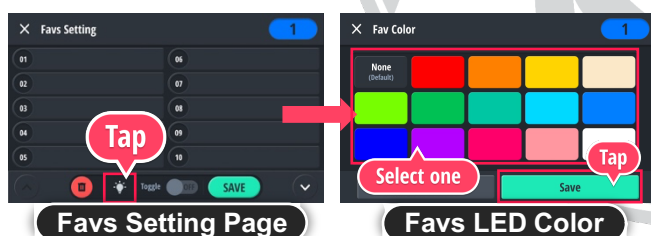


### 7.2. Favs Detailed Description

- Favs supjacks **10 slots**, allowing you to select a slot and configure **MIDI Settings** as desired.
- By using Favs, you can utilize **MIDI globally**.
- For more details about MIDI Settings, see “**5. MIDI Settings.**”

#### 7.2.1. How to Change Favs LED Color

- On the Favs settings screen, press the Led button at the bottom to enter the Favs Color page.
- Select the desired LED.
- Press the Save button to save.

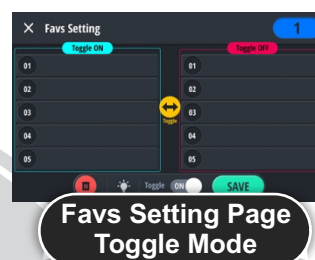


#### 7.2.2. Favs Toggle Mode

- When Favs is set to Toggle Mode, you can assign up to 5 MIDI messages each for Toggle ON and Toggle OFF.
- When Favs in Toggle Mode is assigned to a specific action, the first action triggers Toggle ON and turns the LED on.
- When the second action is triggered, Toggle OFF operates and the LED turns off.

#### ! Important:

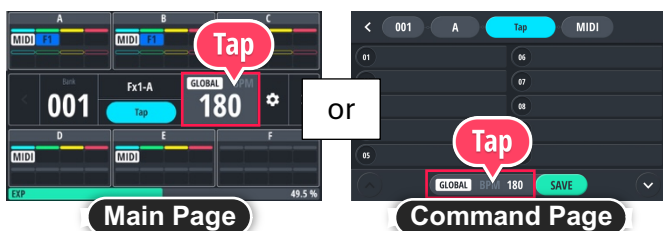
Favs toggle mode only applies LED effects during **Tap actions**.



## 8. Clock Setting

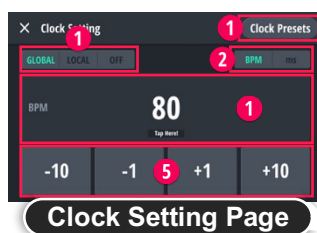
### 8.1. Clock Setting Location

- You can enter by tapping the Clock area in the center of the main page.
- Alternatively, you can access it by tapping the Clock section at the bottom of the Command page.



### 8.2. Detailed Clock Settings Description

- 1) ① Move to the **Clock Preset** page.  
(See 9. Clock Presets)
- 2) ② **Tempo Mode**: Select from Global, Local, or Off.
  - **Global**: A global tempo applied to the entire device
  - **Local**: Tempo for the selected switch > action
  - **Off**: No tempo set for the selected switch > action
- 3) ③ **Clock Unit**: Select between BPM or milliseconds (ms).
- 4) ④ The current Clock is displayed.  
You can **tap the screen to adjust the tempo**.
- 5) ⑤ Use this button to **adjust the Clock**.

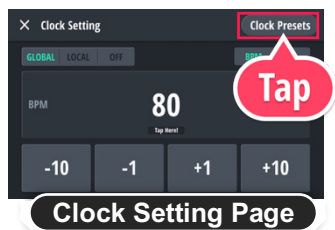




## 9. Clock Presets

### 9.1. Clock Preset Location

Press the Clock Presets button at the top of the Clock Configuration page to enter.



### 9.2. Clock Preset Location

You can store up to 30 presets in Clock Presets.

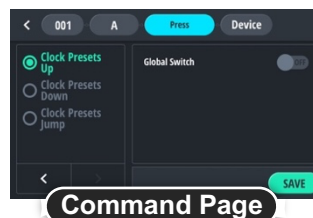
- ① To select the current preset, tap the **Preset area**.
- ② To register or edit a preset, tap the **Pencil icon**.
- ③ To delete all presets, tap the **"Empty All"** button.



### 9.3. How to Operate Clock Presets

- 1) Change Command Type setting to Device type.  
(See 4.3.1. How to Change Action Type)
- 2) **Select Control Method**
  - You can control presets by selecting one of the following:

- **Clock Presets Up**
- **Clock Presets Down**
- **Clock Presets Jump**



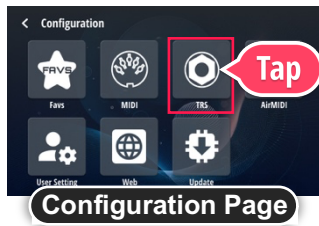
### 3) Behavior When No Clock Preset Is Selected

- When **Clock Presets Up** is executed:
  - **The first preset** is automatically selected and activated.
- When **Clock Presets Down** is executed:
  - **The last preset** is automatically selected and activated.

## 10. TRS Jacks Configuration

### 10.1. TRS Jacks Configuration Location

- Select TRS in Configuration Page.

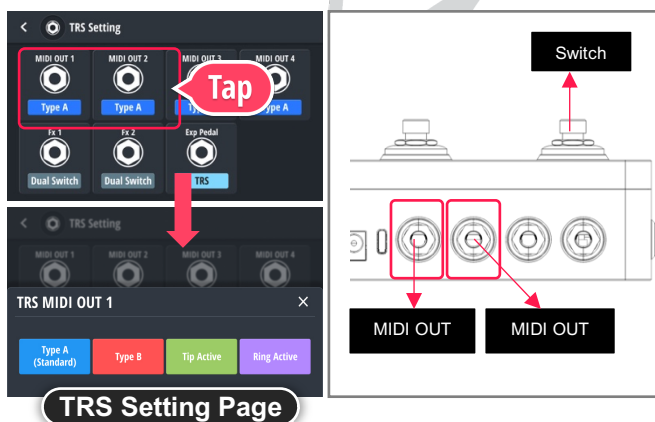


- The actual TRS images and settings for each TRS type are as follows.

### 10.2. TRS Jacks explanation

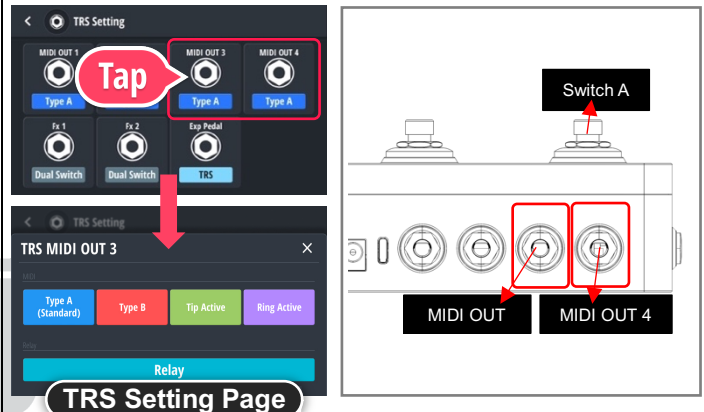
#### 10.2.1. TRS MIDI OUT

- For the MIDI OUT1 and MIDI OUT2 jacks, refer to the image below.
- These jacks are dedicated for **MIDI OUT only** and support TRS MIDI transmission methods: **Type A**, **Type B**, **Tip Active**, and **Ring Active**.



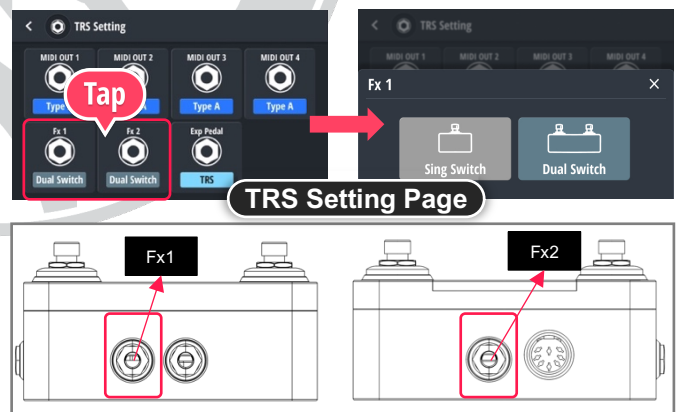
#### 10.2.2. TRS MIDI OUT & Relay

- For the MIDI OUT3 and MIDI OUT4 jacks, refer to the image below.
- These jacks provide all functions of "**TRS MIDI OUT**" (see 10.1.1 TRS MIDI OUT) and additionally support the **Relay (Isolated Relay)** function.
- This function enables actual amp **clean/drive channel switching** and provides functionality similar to the JHS Red Remote. (See 5.5 Relay)



#### 10.2.3. Fx1, Fx2

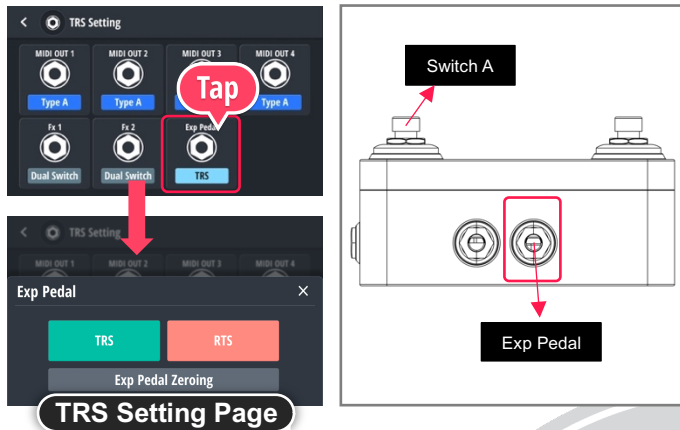
- **Fx1** and **Fx2** are expandable external switches. These jacks can be connected to either a single-button switch or a standard 2-button switch.



- External switches do **not** support **Union Switch** (switch combination) functions or **Tap Tempo** functions.

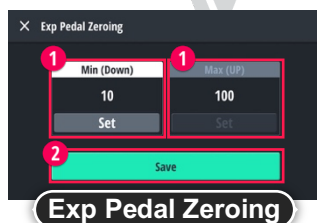
#### 10.2.4. Exp Pedal

- This port is for **expression pedals** and supjacks both **TRS** and **RTS** connection method.
- It also provides **zero-point calibration for the minimum and maximum values** of the expression pedal.



#### • How to Perform Zero-Point Calibration:

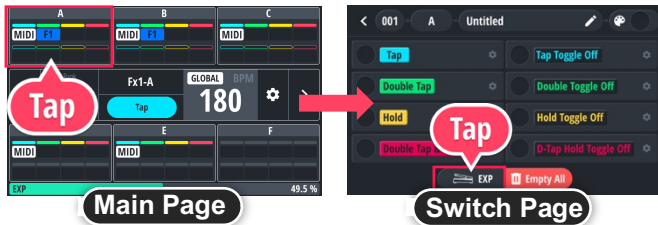
- 1) ① **Tap the MIN (DOWN) area**, then fully press the expression pedal to its **minimum position to set the zero point**.
- 2) ② **Tap the MAX (UP) area**, then fully press the expression pedal to its **maximum position to set the zero point**.
- 1) ③ Press the **Save** button to save the zero points.



## 11. Exp Pedal

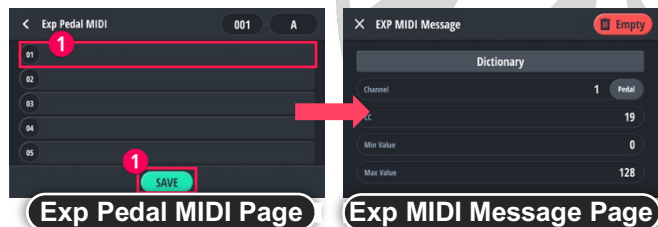
### 11.1. Ext Pedal Configuration Location

- 1) On the Main page, select a switch
- 2) At the bottom of the Switch page, select the **EXP** button.



### 11.2. How to Set Up Ext Pedal Messages

- Expression pedal messages support only CC (Control Change).
- Each switch provides 5 MIDI CC (Control Change) messages.
  - ① Select and tap one of the messages from 1 to 5.
  - After completing all message settings, press the ② **Save** button to save.



## 12. AirMIDI

### 12.1. AirMIDI Location

In the Configuration page, select **AirMIDI**.



### 12.2. How to Set Up AirMIDI

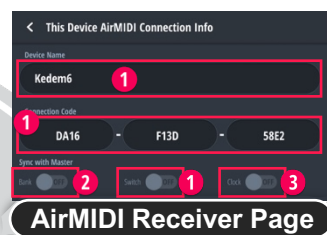
#### 12.2.1. Basic Information About AirMIDI

- **AirMIDI** consists of a **transmitter (sending device)** that sends messages and a **receiver (receiving device)** that receives messages. Each device has a unique connection code, and the transmitter must register the receiver's code in order to send messages.
- Any device can act as either a transmitter or a receiver, and the role can change depending on the connection settings.
- Once the transmitter and receiver are registered, MIDI messages are transmitted by default.
- The receiver **can also configure whether to link bank, switch, and clock messages**.
  - 1) ① **AirMIDI Receiver Manager**: A menu for managing connected receivers from the transmitter's perspective.
  - 1) ② **This Device AirMIDI Connection Info**: A menu for checking this device's connection code from the receiver's perspective.



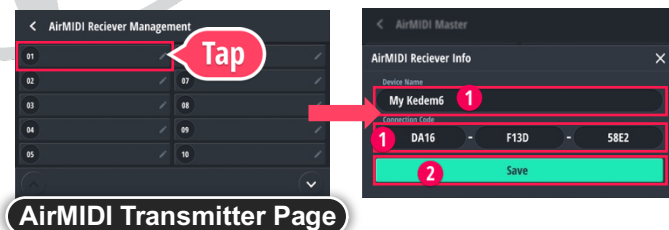
#### 12.2.2. Receiver Settings

- From the receiver's perspective, when selecting **This Device AirMIDI Connection Info**, the following information is displayed:
  - 1) ① **Device Name**  
(The device name can be edited in 12.2. Device Name.)
  - 2) ② **Connection Code**
- Items that can be synchronized with the transmitter's information:  
(Each item can be turned ON/OFF on the receiving device)
  - 1) ③ **Bank**
  - 2) ④ **Switch**
  - 3) ⑤ **Clock**



#### 12.2.3. Transmitter Setting

- 1) **On the AirMIDI Receiver Manager** screen, select the desired slot.
- 2) Enter an easily identifiable **Device Name**. (It does not have to be exactly the same as the Device Name in the receiver information.).
- 3) **The Connection Code** must exactly match the code of the receiving **device**.
- 4) Finally, press the **Save** button to save.



## 13. User Setting

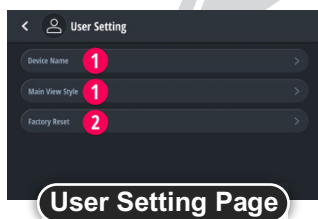
### 13.1. User Setting Location

In the Configuration page, tap **User Setting** to enter.



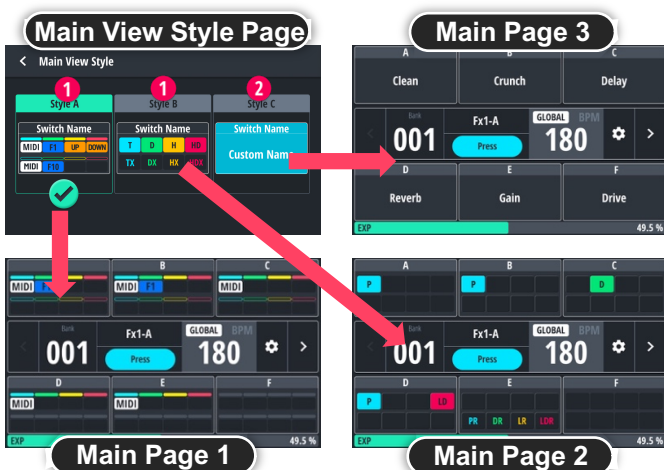
### 13.2. User Setting Details

- 1) ① **Device Name**: Edit the name so the user can identify the device.
- 2) ② **Main View Style**: Change the style of the main screen.
- 3) ③ **Factory Reset**: Reset the device to factory default settings.



### 13.3. Main Page Style

Refer to the image below for the **Main page view style**.



### 13.4. Factory Reset

- On the User Configuration page, tap the **Factory Reset** button to open the factory reset modal.
- Press the **red Factory Reset button** at the bottom of the modal to start the reset process.
- Once the factory reset is complete, all saved data will be deleted. Do not interrupt the process once it has started, **as this action cannot be undone**.

**⚠ Caution! 100%** Do not turn off the power until it is **100%** complete. If the power is cut off during the factory reset, the **device may not operate properly**.





## 14. Web

Judahs products **open their own web server, allowing access to product functions through a web browser** on a computer connected to the same network.

This enables easy use of key features (e.g., backup and restore) directly through the browser **without installing any additional software**.

**⚠ Important:** The computer (or smartphone) you want to connect **must be on the same Wi-Fi network as Kedem 6**.

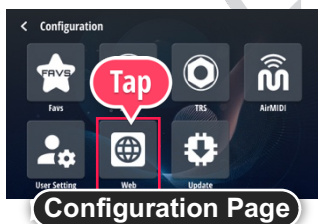
**⚠ Judahs products can only connect to 2.4GHz Wi-Fi networks.** They will not connect on 5GHz-only networks, so please **check your Wi-Fi router's 2.4GHz settings**.

You can also connect using **the mobile hotspot feature on iPhone or Android devices**. However, in this case, the hotspot must be set to the 2.4GHz band.

Depending on the device, you may need to change this setting manually. For hotspot frequency settings, please **contact your phone manufacturer or mobile carrier**.

### 14.1. Web Location

- 1) On the main screen, select the Settings button (gear icon)
- 2) In the Configuration page, select **Web**



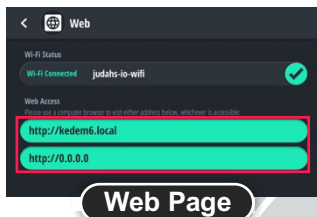
### 14.2. How to Connect to Wi-Fi

- 1) To connect to **Wi-Fi**, select the **Wi-Fi connection** button labeled **Wi-Fi Disconnected**.
- 2) When you select the Wi-Fi SSID, a list of available Wi-Fi networks will appear. Select the Wi-Fi network you want to connect to.
- 3) Enter the password and press the Connection button to proceed to the Wi-Fi connection loading screen.
- 4) If the Wi-Fi connection is successful, a Wi-Fi connection success screen will appear. If the connection fails, a Wi-Fi connection failure screen will appear.



## 14.3. How to Access the Web Server

- 1) Once the product is connected to Wi-Fi, the domain or IP address will be displayed at the bottom of the web screen.
  - Domain: <http://kedem6.local> ○
  - IP Address: <http://0.0.0.0>  
The IP address may vary depending on the environment.
- 2) Enter the displayed domain or IP address into your computer's web browser address bar to access it.
- 3) Once connected, you can use the web-based settings and feature management screen.

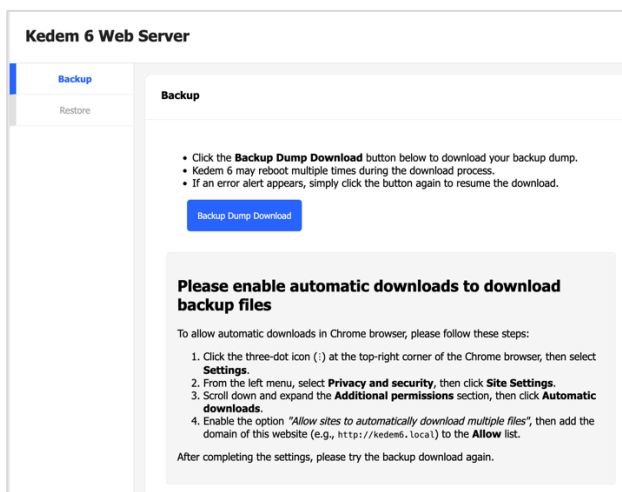


## 14.4. Data Backup

You can download the current configuration data as a backup file (.zip). Please store it in a safe place for future restoration.

### 14.4.1. How to Use Data Backup

- 1) Click the Backup Dump Download button
- 2) The backup (.zip) download will start automatically
  - Kedem 6 may restart several times during the process, but the **backup will continue automaticall**.



- Browser Security Download Restriction: Approval may be required just before downloading. Please check the settings for each major browser below.

### Chrome

To allow automatic downloads in the Chrome browser, follow these steps:

- 1) Click the three-dot icon (⋮) in the top-right corner of the browser, then select 'Settings'.
- 2) In the left menu, go to Privacy and security → 'Site Settings'.
- 3) Scroll down and expand the Additional permissions section, then click 'Automatic downloads'.
- 1) **Enable the option 'Allow sites to automatically download multiple files', and add the site address (e.g., <http://kedem6.local>) to the allowed list.**

### Edge

- 1) By default, downloads over HTTP (non-secure) may show a warning or be blocked.
- 2) If blocked, you can proceed by selecting the **Keep/Keep anyway** option in the download window.

### Firefox

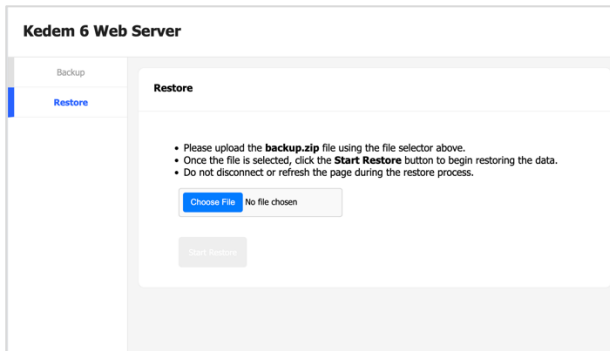
- 1) When downloading over HTTP, a "Potential security risk" warning may appear and the download may be blocked. **You can choose to allow or stop the download from the download panel.** [ghacks.net](http://ghacks.net)
- 2) How to disable blocking (for advanced users):  
about:config 에서 In about:config, set dom.block\_download\_insecure = false  
[learn.microsoft.com+15support.mozilla.org+15support.mozilla.org+15](http://learn.microsoft.com+15support.mozilla.org+15support.mozilla.org+15)

### Safari (Mac)

- You can turn off the "Not Secure" warning when using HTTP sites:
- macOS: **Safari > Settings > Security > WmacOS: Safari > Settings > Security > Disable "Warn before connecting to a website over HTTP"**

## 14.5. Data Restore

- 1) **Click the Choose File button**
  - Upload the backup zip file
  - The file name does not matter as long as the file format inside the zip is correct.
- 2) **Click the Start Restore button (it will become active)**
  - When clicked, the existing settings will be overwritten, and the restore process will begin.



**⚠ Caution:** If you upload a zip file received as a backup after modifying it without authorization, it may cause **serious errors** or **stop the device** from functioning. Such issues are **not covered under warranty**, so do not modify the file under any circumstances.

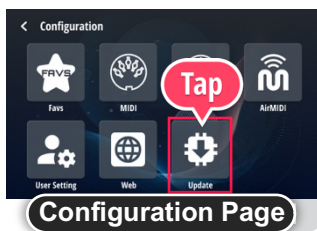
## 15. Update

It provides a feature that allows you to directly connect to Wi-Fi to automatically check the latest firmware version, and if an update is available, the user can immediately perform the update directly from the device.

Once Wi-Fi is connected successfully, the system automatically checks for the latest version based on the current firmware information. If an update is available, it can be installed easily without using a separate PC or app.

### 15.1. Update Location

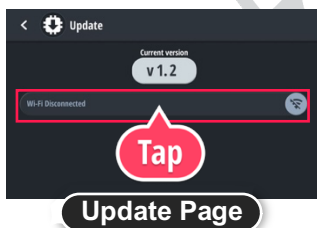
- 1) On the main screen, select the Settings button (gear icon).
- 2) In the Configuration page, select Update



### 15.2. Firmware Update

Firmware updates are divided into three statuses depending on the screen. Please follow the instructions according to your situation.

- 1) When Wi-Fi is not connected
  - Refer to **14.2. How to Connect to Wi-Fi** and complete the Wi-Fi connection first.



- 2) **When no firmware update is available**
  - The current version is up to date. There are no further updates available.



### 3) When the next available version is displayed

- Press the Update button to proceed with the update.



## 16. Warranty and Support

All Judahs products come with a limited warranty of 2 years from the date of purchase. This warranty applies to the original purchaser and covers manufacturing defects that occur under normal use. If a defect is confirmed, the product will be repaired or replaced free of charge.

### Warranty Exclusions

- **Damage caused by improper use, accidents, unauthorized modifications, or improper maintenance is not covered.**
- **Cables, batteries, cases, and other consumable items are not covered.**
- The warranty applies only to the original purchaser and is non-transferable.

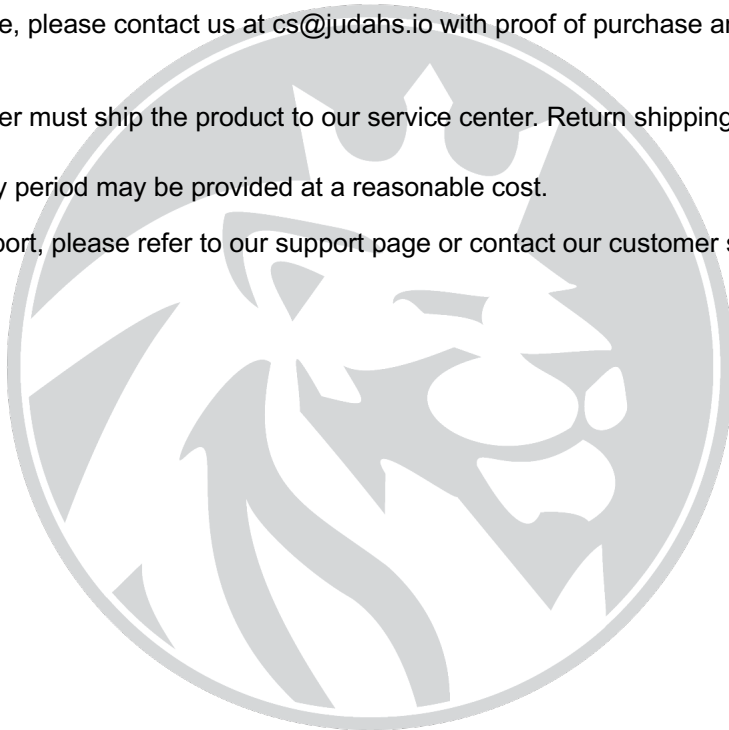
### How to Request Warranty Service

To request warranty service, please contact us at [cs@judahs.io](mailto:cs@judahs.io) with proof of purchase and a detailed description of the issue.

After approval, the customer must ship the product to our service center. Return shipping fees may apply depending on the situation.

Repairs outside the warranty period may be provided at a reasonable cost.

If you need additional support, please refer to our support page or contact our customer service team.



## 17. Legal Notices

All Judahs products are designed and manufactured in compliance with industry standards. By purchasing and using Judahs products, you are deemed to agree to the following terms:

- **Intellectual Property Rights:** All product designs, software, and trademarks are the property of Judahs. Unauthorized reproduction, modification, or distribution is strictly prohibited.
- **Limitation of Liability:** Judahs is not responsible for incidental or consequential damages resulting from improper use of the products. Our liability is limited to the purchase price of the product.
- **Regulatory Compliance:** Our products meet applicable industry regulations and certifications. It is the user's responsibility to comply with local laws and electronic device usage restrictions.
- **Policy Changes:** Judahs reserves the right to change its legal policies at any time. Please check our website for the latest information

For legal inquiries, please contact [cs@judahs.io](mailto:cs@judahs.io).

